

Guidance Notes

on the
Waste Electrical & Electronic Equipment
(WEEE) Regulations 2006

CONTENTS

	PAGE
Introduction	3
What EEE has to be counted?	3
<i>Exemptions from the WEEE Regulations</i>	4
What is a Producer?	5
How do I determine what type of Producer my Company is?	5
Responsibilities of a Distributor	6
Responsibilities of B2B & B2C Producers	7
<i>Registration</i>	7
<i>Product Markings</i>	7
<i>Quarterly Sales Data</i>	7
<i>Record Keeping</i>	8
Obligation Differences Between B2B & B2C Producers	8
<i>B2B Requirements</i>	8
<i>B2C Requirements</i>	9
How does the Evidence Note system work?	9
What is Transform's role?	9
Enforcement	10
Annual Timetable	10
Summary	11
Glossary	12
Further information	12
Appendix 1 – Category Lists	13
Appendix 2 – Environment Agency Scope Guidance	15

INTRODUCTION

Waste from Electrical & Electronic Equipment (EEE) is one of the fastest growing waste streams in the UK. The Waste Electrical and Electronic Equipment (WEEE) Regulations 2006 were introduced with the aims of:

- reducing the waste from Electrical & Electronic Equipment;
- encouraging the separate collection of WEEE from Households and Businesses, thereby reducing the amount of WEEE sent to landfill;
- encouraging treatment, reuse, recovery, recycling and environmentally sound disposal of WEEE through Approved Authorised Treatment Facilities (AATFs); and
- ensuring Producers of EEE are responsible for the financial costs and environmental impact of their products.

The WEEE Regulations pass the responsibility for financing the treatment, recycling and disposal of EEE back to the Producer of the product and are part of a number of regulations commonly known collectively as the Producer Responsibility Regulations. The Regulations were introduced following the EU WEEE Directive and transpose the requirements of the directive into UK law. The WEEE Regulations came into force on 2 January 2007 and were fully implemented on 1 July 2007. These guidance notes accommodate all amendments and EA guidance up to April 2010.

WHAT EEE HAS TO BE COUNTED?

Under the WEEE Regulations EEE is defined as:

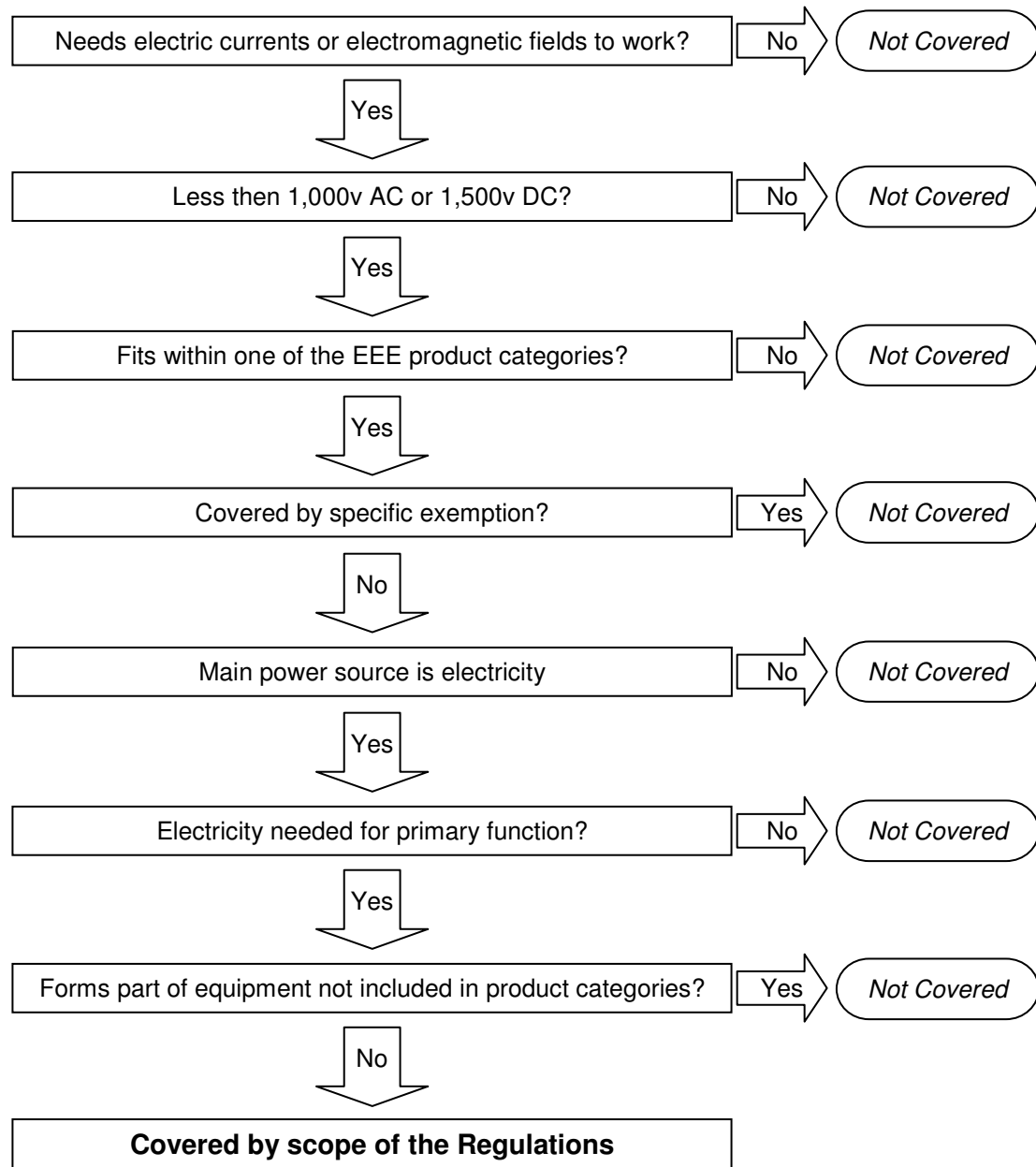
“equipment which is dependent on electric currents or electromagnetic fields in order to work properly and equipment for the generation, transfer and measurement of such currents and fields falling under the categories set out in Schedule 1 to these Regulations and designed for use with a voltage rating not exceeding 1,000 volts for alternating current and 1,500 volts for direct current”

All EEE products within the scope of the regulations fall into one of the categories listed below, regardless of whether they are designed for use by householders or non-householders. The first two categories include ‘household’ in the title, but similar products used or designed for non-household use should still be reported in these categories (e.g. a washing machine designed to be used in a launderette or industrial laundry should still be reported in category 1). Further guidance on the type of products included in each category is listed in appendix 1.

<u>EEE Categories</u>	Category 1	Large Household Appliances
	Category 2	Small Household Appliances
	Category 3	IT & Telecommunications Equipment
	Category 4	Consumer Equipment
	Category 5	Lighting Equipment
	Category 6	Tools
	Category 7	Toys, Leisure & Sports Equipment
	Category 8	Medical Devices
	Category 9	Monitoring & Control Instruments
	Category 10	Automatic Dispensers
	Display Equipment	
	Cooling Appliances Containing Refrigerants	
	Gas Discharge Lamps	

Producers are responsible for assessing and determining if a product is obligated (in scope) of the Regulations. Generally, there are very few electrical products that are not covered by the Regulations, but if there is a genuine reason for believing that it should not be covered, guidance from Transform or the Environment Agency should be sought.

Below is a copy of the 'decision tree' produced by the Department for Business Innovation & Skills (BIS) which can be used to decide whether or not a product falls within scope of the regulations.



Exemptions from the WEEE Regulations

There are a number of product exemptions included in the WEEE Regulations. These are:

- Equipment designed to protect the UK's national security and/or for military purposes

- Products where electricity is not the main power source (i.e. through a battery or mains supply)
- Products where the electrical or electronic components are not needed to fulfill the primary function
- EEE that is part of another type of equipment that is not covered by the WEEE Regulations
- Fixed installations
- Large-scale stationary industrial tools
- Household luminaries (Category 5 for B2C only) however it should be noted that some lighting products may fall into another EEE category
- Filament light bulbs
- Implanted and infected medical devices
- Spare parts, components or consumables (however accessories such as audio headphones & computer keyboards are considered to be EEE as they are finished products and are useless without the EEE that they are used with)

If you feel that your products may fall under these exemptions we would encourage you to seek further advice to ensure that they are out of scope.

WHAT IS A PRODUCER?

Under the WEEE Regulations a Producer is classed as any company who places EEE onto the UK market by:

- Importing – *if you bring (or arrange for others to bring) EEE into the country on a professional basis either to sell them to others or to use them within your own business;*
- Manufacturing – *by making or assembling EEE products to be sold under your own brand name; or*
- Re-branding – *by purchasing finished products from a manufacturer or importer to sell under your own brand name. Companies would be classed as re-branders even if the manufacturer or importer re-brands the product on the company's behalf.*

Any company who undertakes any of the above activities is classed as a Producer regardless of company size, market share or selling technique. Companies that are non-UK based are also required to register. Producers may be Companies registered with Companies House; Partnerships; or Sole Traders. Under the Regulations group registrations are not permitted and each subsidiary of a Company must register as a separate Producer.

HOW DO I DETERMINE WHAT TYPE OF PRODUCER MY COMPANY IS?

There are two different types of Producer each with slightly different obligations under the WEEE Regulations. This depends on whether the EEE that they produce is intended to be used by householders or for non-householders.

The regulations determine WEEE from private households as 'WEEE which comes from private households and from commercial, industrial, institutional and other

sources which, because of its nature and quantity, is similar to that from private households', however this can be referred to as:

- B2C
- Business to Consumer
- Household

All other WEEE is defined by the Regulations as 'WEEE from users other than from private households', which can be referred to as:

- B2B
- Business to Business
- Non-household

The Producer's obligation is determined by who ends up using and ultimately disposing of it and not by who purchases EEE products. Therefore, if a Producer sells EEE to a retailer or another business who then sells that product to a member of the public their obligation is classed as B2C. However, if a Producer sells EEE to a retailer who then sells it to an end-user who is a business this is classed as B2B. It is important to note that a Producer can have a B2B or a B2C obligation or both.

Where the Producer sells identical products to both B2B and B2C users these are initially defined as household EEE, unless the Producer can provide evidence that the EEE was supplied to B2B end-users.

RESPONSIBILITIES OF A DISTRIBUTOR

Distributors are classed under the Regulations as any company who provides EEE to the party (person) who is going to use the product, i.e. sell direct to household end-user of the product. Companies can be both Producers and Distributors under the Regulations.

The main obligations placed on Distributors are to:

1. Ensure that WEEE can be returned to them free of charge and on a one-to-one basis when supplying EEE of an equivalent type or that fulfils the same function. Distributors can fulfil their first obligation either by:
 - providing in-store take-back or alternative free take-back service; or
 - joining the Distributor Take-back Scheme (DTS)
2. Make written information available to users of EEE on:
 - the collection and take-back systems available;
 - their role in contributing the reuse, recycling & other forms of WEEE recovery;
 - the potential effects on the environment and human health as a result of the presence of hazardous substances in EEE; and
 - the meaning of the crossed out wheeled bin symbol
3. Keep records of the number of units of WEEE returned under the Regulations
4. Keep records of the information made available to users of EEE
5. Request details of the WEEE PRN from each Producer when they purchase EEE and to inform the EA if they are unable to obtain the Registration Number.

RESPONSIBILITIES OF B2B & B2C PRODUCERS

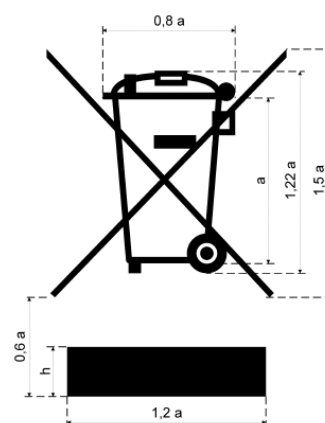
Registration

All Producers must register with a Producer Compliance Scheme (PCS), within 28 days of first placing EEE onto the UK market. Transform is an accredited PCS and is able to discharge the obligation of both B2B & B2C Producers. The registration process requires Producers to pay the relevant fee associated with their registration and to provide all company information. Once this information has been provided and verified Transform will then submit the registration to the Environment Agency. The Environment Agency will confirm registration and issue a Producer Registration Number (PRN). The PRN will be unique to your company and will only change should the legal entity change i.e. change of company registration number. The PRN should be provided to all business customers at the time of sale.

Product Markings

Producers should ensure that all new EEE placed onto the market is marked with:

- The crossed out wheeled bin symbol (as illustrated on the right). The standard for the symbol has been approved by the European Commission as meeting the requirements of the WEEE Directive and can be obtained from the British Standard Institute (BSI) at www.bsi.org.uk (published as **BS EN 50419:2006**)
- A Producer Identification Mark (PIM). This is the unique identification of the Producer and can take the form of a brand name, trademark, logo, company registration number or other suitable means to identify the Producer of that product. All PIMs should be provided to Transform to be submitted to the Environment Agency for the purposes of their Public Register, as this also forms part of the information required as part of the registration process.
- Date of manufacture (i.e. the black rectangle below the wheeled bin symbol which shows that the product was produced after 13 August 2005, or a date code)



All marks should be placed on the EEE product in a visible, legible and indelible form. However, where this is not possible the marks should be printed on the fixed supply cord (if there is one on the product) and on the instructions or warranty of the product (if supplied to the end-user). Where this is not possible the marking should be included in the product packaging.

Producers should provide information on reuse and environmentally sound treatment for any new products placed onto the UK market upon request of a reuse or treatment facility.

Quarterly Sales Data

Producers are required to provide details on a quarterly basis of the amount of EEE, in tonnes, that they place onto the market, stating the obligation type (i.e. B2B or B2C) against the appropriate category. Transform will then verify this information and submit to the Environment Agency.

Producers should assess each item of EEE to ensure that it is in scope of the Regulations to ensure accuracy in data reporting.

Members are required to submit weights, in metric tonnes to 3 decimal places, for all EEE products placed onto the UK market, by category. To calculate the total tonnage for each category of EEE you have placed onto the UK market, multiply the number of units of EEE sold by the weight of each EEE product. Data should be submitted on the weight of the item as a whole product, as it is placed on the market, as this will be how it is disposed of by the end-user at its end of life. The weight should exclude all packaging, instructions and warranty of the product and the weight of batteries built-into or supplied with the product.

Under the regulations members are required to provide weights that are “as accurate as reasonably possible“, therefore we would advise all members to have a written procedure in place showing how EEE is assessed and how the data submission is calculated. This procedure should be auditable and allow someone else within your company to calculate your EEE sales data for submission if you are not available.

Record Keeping

All Producers are required under the Regulations to ensure all records of registration and data collations along with any supporting documents showing how the submission was calculated are maintained for four years, this is a legal requirement.

OBLIGATION DIFFERENCE BETWEEN B2B & B2C PRODUCERS

The main difference in legal requirements of B2B and B2C producers is in the financing of WEEE collections and treatment.

All Producers are required to finance the costs of collection, treatment, recovery and environmentally sound disposal of EEE. However, there are differences in the way in which this is financed by B2B and B2C Producers.

B2B Requirements

B2B obligated Producers are required to finance the costs of collection, treatment, recovery and environmentally sound disposal of EEE from B2B end users:

- that they have placed onto the market since 13 August 2005; or
- where they are supplying new EEE intended to replace products that were placed onto the market before 12 August 2005

There are several different ways that a B2B obligated Producer can fulfil this obligation:

- The Producer can establish their own system of WEEE take-back from their end-users. Producers must ensure that:
 - the WEEE is taken to an AATF and the WEEE is treated in line with the Regulations; and
 - the evidence of the treatment is entered by the AATF onto the Settlement Centre and the associated evidence notes allocated to Transform to show that your company is compliant with the Regulations;

- The Producer can enter into an agreement with their end-users to make alternative arrangements to finance the collection, treatment, recovery and environmentally sound disposal of WEEE thereby discharging this responsibility; or
- The Producer can contact Transform to request WEEE collection and treatment from their site and/or their end-users premises.

B2C Requirements

The Regulations require B2C Producers to pay for their share of all EEE products recovered and recycled, in the UK.

The EEE sales that Producers report quarterly helps to determine their market share. This is calculated by dividing the weight of EEE placed onto the market from each Producer by the total EEE placed onto the UK market over the same period of time (by category). This market share calculation is then applied to the total WEEE that is collected and treated within the UK during the same period of time. This provides each Producer with their obligation.

It is important to be aware that the figures used to calculate the market share aren't finalised until after the end of the compliance year (Normally in May). Therefore, the obligation for Transform quarterly invoice is based on Member's quarterly obligation throughout the past four quarters. Once the final obligation is established a reconciliation invoice or credit is issued.

HOW DOES THE EVIDENCE NOTE SYSTEM WORK?

The evidence note system was established so that Producers can demonstrate that they have contributed towards the financial cost of collection, treatment, recovery and environmentally sound disposal of their share of WEEE and that this has been completed in an appropriate manner.

Evidence of the weight of WEEE collected, treated, recovered and disposed of is generated by an AATF for each tonne of WEEE that they receive. The AATF then issue a WEEE Evidence Note through the WEEE Settlement Centre. The AATF has to ensure that the WEEE has been treated in line with best available techniques of recovery, recycling and treatment (BATRRRT) and that reuse/recycling and recovery targets have been met.

Approved Exporters (AEs) are able to issue evidence in the same way as AATFs and the evidence notes have the same status as those generated by AATFs.

Evidence notes are specific to the type of obligation and type of EEE which has been treated and disposed.

WHAT IS TRANSFORM'S ROLE?

Transform assumes legal liability for ensuring that their members are compliant with the regulations. However, members still retain responsibility for ensuring that the information that they submit to the scheme is correct.

Membership Services:

- Registers members as Producers with the relevant Environment Agency;
- Reports information on the amount of EEE placed onto the UK market, by category and obligation type, for each member;
- Verifies of all information submitted to Transform prior to submission to the Environment Agency;
- Takes responsibility for ensuring that enough evidence is obtained to meet the obligation of all B2C members at competitive rates;
- Provides members with their PRN and Certificate of Registration;
- Provides advice & guidance from Compliance Specialists;
- Provides regulatory and EA updates;
- Undertakes regular compliance monitoring visits;
- Provides a comprehensive online data submission system or the option to complete paper-based forms;
- Provides cost-effective WEEE collection and treatment arrangements

ENFORCEMENT

The Regulations, in relation to Producer obligations, are enforced in England and Wales by the Environment Agency (EA), in Scotland by the Scottish Environmental Protection Agency (SEPA) and in Northern Ireland by the Northern Ireland Environment Agency (NIEA). Their role includes:

- Approving, registering and monitoring PCS; AATF and AEs;
- Managing data on market share, WEEE collection, treatment and reprocessing;
- Ensuring Producers are registered, providing accurate information and complying with their legal obligations;
- Maintaining a Public Register of Producers and lists of Approved Producer Compliance Schemes, AATFs and AEs;
- Ensuring businesses dispose of WEEE in an acceptable manner;
- Providing advice and guidance on the interpretation of the Regulations;
- Identifying non-compliant companies (Freeriders) and ensuring their compliance.

The Vehicle Certification Agency (VCA) is an executive agency of the Department of Transport and is responsible for enforcing:

- EEE Distributor responsibilities and ensuring that Distributors play their part in helping B2C users to dispose of WEEE
- Producer obligations relating to the marking of EEE with the crossed out wheeled bin symbol

ANNUAL TIMETABLE

The key deadlines for Schemes and Producers are laid out below. Transform also sets their own deadlines to ensure compliance is achieved; these are communicated to members by regular e-mail updates and by the publication of a yearly Compliance Calendar.

1 Jan	Start of Compliance Period
22 Jan	Deadline for members to submit Quarter 4 (in previous year) EEE Sales Data
31 Jan	Deadline for Scheme to submit Quarter 4 (in previous year) EEE Sales Data & WEEE Collection Data to EA
28 Feb	EA publishes preliminary obligation (for previous year)

31 Mar	EA publishes final obligation (for previous year)
22 April	Deadline for members to submit Quarter 1 EEE Sales Data
30 Apr	Deadline for Scheme to submit Quarter 1 EEE Sales Data & WEEE Collection Data to EA
30 April	Scheme submits Declaration of Compliance (for previous year) to EA
22 July	Deadline for members to submit Quarter 2 EEE Sales Data
31 July	Deadline for Scheme to submit Quarter 2 EEE Sales Data & WEEE Collection Data to EA
31 July	Scheme submits Updated Operational Plan (for next year)
30 Sep	Environment Agency notifies the scheme of Approval (for next year)
22 Oct	Deadline for members to submit Quarter 3 EEE Sales Data
31 Oct	Deadline for Scheme to submit Quarter 3 EEE Sales Data & WEEE Collection Data to EA
15 Nov	Member submission of Application to Register (for following year)
30 Nov	Scheme submission to EA of Registering Members (for following year)
31 Dec	End of Compliance Period

SUMMARY

- The regulations apply to most Electrical & Electronic Equipment (EEE) used in households, businesses and other organisations
- Manufacturers, Importers and Re-branders of EEE are classed as Producers
- The end-user of EEE determines the type of Producer (B2B or B2C)
- There are 13 different categories of EEE
- Producers of EEE have a legal requirement to:
 - join a Producer Compliance Scheme;
 - report details of any EEE that they place onto the market by obligation type & by category;
 - mark all new products placed on the market with the crossed out wheeled bin symbol, their own identifying mark (PIM) and date mark;
 - finance the collection, treatment, recovery & environmentally sound disposal of any EEE placed onto the market by them by paying their market share of any WEEE generated in the current compliance year (for B2C Producers);
 - finance the collection, treatment, recovery & environmentally sound disposal of EEE once it has reached end of life or come to an alternative arrangement with their customer (for B2B Producers);
 - retain records for a minimum of 4 years;
- The EA / SEPA / NIEA are the enforcing bodies for Producers
- Distributors have different responsibilities to Producers under the Regulations

GLOSSARY

Under these regulations you will find that a significant number of acronyms are used. Some of the common ones that you will come across are below:

AATF	Authorised Approved Treatment Facility
AE	Approved Exporters
B2B	Business to Business / Non-household / WEEE from users other than from private households
B2C	Business to Consumer / Household / WEEE from private households
BERR	The Department for Business Enterprise & Regulatory Reform
BIS	The Department for Business Innovation & Skills
CA Site	Civic Amenity Site (Council Tip)
CRT	Cathode Ray Tube
DCF	Designated Collection Facility
DEFRA	Department for Environment & Rural Affairs
DoC	Declaration of Compliance
DTS	Distributor Take-back Scheme
EA	Environment Agency
EEE	Electrical & Electronic Equipment
LHS	Large Household Appliances (Category 1)
NIEA	Northern Ireland Environment Agency
PCS	Producer Compliance Scheme
PIMs	Producer Identification Marks (Logos, Brand Marks)
PRN	Producer Registration Number
RoHS	Restriction of Hazardous Substances
SC	Settlement Centre
SEPA	Scottish Environment Protection Agency
SHA	Small Household Appliances (Category 2)
WEEE	Waste Electrical & Electronic Equipment

FURTHER INFORMATION & USEFUL CONTACTS

Transform www.transform-uk.net 01494-556565

Environment Agency www.environment-agency.gov.uk

Netregs www.netregs.gov.uk

BIS www.bis.gov.uk

Links to the full regulations and all amendments are published on this site along with the Government Guidance Notes (November 09) www.bis.gov.uk/files/file54145.pdf

VCA www.vca.gov.uk

APPENDIX 1 – CATEGORY LISTS

List of products from Schedule 2 of the WEEE Regulations

1. Large Household Appliances

- Large cooling appliances
- Refrigerators
- Freezers
- Other large appliances used for refrigeration, conservation & storage of food
- Washing machines
- Clothes dryers
- Dish washing machines
- Cooking
- Electric stoves
- Electric hot plates
- Microwaves
- Other large appliances used for cooking & other processing of food
- Electric heating appliances
- Electric radiators
- Other large appliances for heating rooms, beds, seating furniture
- Electric fans
- Air conditioner appliances
- Other fanning, exhaust ventilation & conditioning equipment

2. Small Household Appliances

- Vacuum cleaners
- Carpet sweepers
- Other appliances for cleaning
- Appliances used for sewing, knitting, weaving & other processing for textiles
- Irons & other appliances for ironing, mangling & other care of clothing
- Toasters
- Fryers
- Grinders, coffee machines & equipment for opening or sealing containers or packages
- Electric knives
- Appliances for hair-cutting, hair drying, tooth brushing, shaving, massage & other body care appliances
- Clocks, watches & equipment for the purpose of measuring, indicating or registering time
- Scales

3. IT & Telecommunications Equipment

- Centralised data processing:
 - Mainframes
 - Minicomputers
 - Printer units
- Personal computing:
 - Personal computers (CPU, mouse, screen & keyboard included)
 - Laptop computers (CPU, mouse, screen & keyboard included)
 - Notebook computers
 - Notepad computers
 - Printers
 - Copying equipment
 - Electrical & electronic typewriters
 - Pocket & desk calculators
 - Other products & equipment for the collection, storage, processing, presentation or communication of information by electronic means
 - User terminals & systems
 - Facsimile
 - Telex
 - Telephones

Pay telephones
Cordless telephones
Cellular telephones
Answering systems
Other products or equipment of transmitting sound, images or other information by telecommunications

4. Consumer Equipment

Radio sets
Television sets
Video cameras
Video recorders
Hi-fi recorders
Audio amplifiers
Musical instruments
Other products or equipment for the purpose of recording or reproducing sound or images, including signals or other technologies for the distribution of sound & image than by telecommunications

5. Lighting Equipment

Luminaires for fluorescent lamps with the exception of luminaires in households
Straight fluorescent lamps
Compact fluorescent lamps
High intensity discharge lamps, including pressure sodium lamps & metal halide lamps
Low pressure sodium lamps
Other lighting or equipment for the purpose of spreading or controlling light with the exception of filament bulbs

6. Tools

Drills
Saws
Sewing machines
Equipment for turning, milling, sanding, grinding, sawing, cutting, shearing, drilling, making holes, punching, folding, bending or similar processing of wood, metal & other materials
Tools for riveting, nailing or screwing or removing rivets, nails, screws or similar uses
Tools for welding, soldering or similar use
Equipment for spraying, spreading, dispersing or other treatment of liquid or gaseous substances by other means
Tools for mowing or other gardening activities

7. Toys, Leisure & Sports Equipment

Electric trains or car racing sets
Hand-held video game consoles
Video games
Computers for biking, diving, running & rowing
Sports equipment with electric or electronic components
Coin slot machines

8. Medical Devices

Radiotherapy equipment
Cardiology
Dialysis
Pulmonary ventilators
Nuclear medicine
Laboratory equipment for in-vitro diagnosis
Analysers
Freezers
Fertilization tests
Other appliances for detecting, preventing, monitoring, treating, alleviating illness, injury or disability

9. Monitoring & Control Instruments

Smoke detector

Heating regulators
 Thermostats
 Measuring, weighing or adjusting appliances for household or laboratory equipment
 Other monitoring & control instruments used in industrial installations (for example, in control panels)

10. Automatic Dispensers

Automatic dispensers for hot drinks
 Automatic dispensers for hot or cold bottles or cans
 Automatic dispensers for solid products
 Automatic dispensers for money
 All appliances which deliver automatically all kind of products

Display Equipment

Personal computer screens that fall within category 3
 Television sets that fall within category 4

Cooling Appliances containing refrigerants

Large cooling appliances
 Refrigerators
 Freezers
 Other large appliances for refrigeration, conservation & storage of food that fall within category 1

Gas Discharge Lamps

Gas discharge lamps which fall within category 5

APPENDIX 2 – ENVIRONMENT AGENCY SCOPE GUIDANCE

The following table sets out how the Environment Agency has interpreted the Regulations for specific number of products not listed in Schedule 2 of the WEEE Regulations. Whilst the EA advice is not legally binding, as the regulator of this legislation, the advice is indicative of how they may interpret the regulations. Producers should also be aware that this advice may change from time-to-time and should ensure that they regularly check this advice to ensure that they are reporting their sales in the appropriate categories and within the guidance of the EA.

List of previous agency advice

Product	In or out?	Category	Comments
Air conditioning	In (see comment)	Category 1	Portable air conditioning units are covered. Air conditioning installed as part of equipment that is not EEE (for example a building) is exempt. Should be declared as category 12 if it contains substances used for refrigeration
Air filtering & extracting systems	In	Category 6	Portable units are covered. Units installed as part of equipment that is not EEE (for example a building) are exempt
Air fresheners, perfume sprayers (the 'plug-in' or battery types)	In	Category 2	
Aerials, Antennas & Digital TV dishes	In	Category 4	See section 3 page 9 on ancillary parts
Battery chargers	In	See comment	The charger should be in the same category as the item that it charges (for example, a mobile-phone battery charger would be in category 3, while a camera battery charger would be in category 4). General battery chargers should be included in category 2
Batteries	See comment		Batteries are not to be included in the weight of EEE if they are supplied with an item of EEE. The weight of batteries built into or supplied with products must be reported separately under the Waste Batteries & Accumulators Regulations 2009

Product	In or out?	Category	Comments
Car-park & traffic management electric barriers	In	Category 9	
Car diagnostic equipment	In	Category 3	Equipment that is plugged into the car's central processing unit to diagnose & record faults depends on electricity to work, & so is classed as equipment that is used to process information electronically
Chip & PIN credit or debit cards	Out		The card itself is considered out of scope but the card reader would be in scope (category 3)
Decorative lights, festive lights, lava lamps, fibre-optic lights, night lights & so on	Out	Does not apply	All household light fittings are exempt from the regulations. However, they are not exempt from the RoHS regulations
Display equipment	In	Category 11	All display equipment (including CRT TVs, plasma screens, LCDs & so on) should be declared as category 11 – display equipment. TVs should not be included in category 4 & computer screens should not be included in category 3. Display screens that are a vital part of another product (for example, laptop screens, mobile-phone screens & mp3 player screens) should be declared in the category for the relevant equipment – laptops (category 3), mobile phones (category 3), mp3 players (category 4) & so on.
Disposable cameras	In	Category 4	Disposable cameras that are recycled should be declared as non-household EEE. Such cameras are normally returned to a film processor, who will either recycle the camera or discard it
Duty Free	In		Whilst the goods may leave the UK once they are sold - because the end-user is travelling - the goods were still supplied to be put on the UK market (e.g. to British Airways or another duty free operator)
Extension cords, multi-terminals, adaptors & leads	In	Category 2	If these products are not sold in relation to a specific product, they should be declared as category 2
Electric fences	In	Category 6	
Fire-alarm systems	In	Category 9	Finished products that rely on electricity & form part of a fire-alarm system are included as EEE. This could include smoke detectors, alarm bells, lighting, sprinklers & so on
Fish tanks	In	Category 7	A fish tank that has a built-in light, heater or pump & is sold as a single commercial unit is classed as EEE. The whole weight of the item should be included
Furniture with electrical components	Out		Items of home furniture with electrical components (for example, an electric bed, electric chair & so on) are considered not to be covered by the regulations. The main function of the item is 'furniture', which is not a category in the regulations, & the electrical component becomes part of equipment that is not electrical
Gas turbines	Out		Gas-powered turbines used to create electricity are outside the regulations as they do not rely on electricity to work
Hearing aids	In	Category 8	
In-car entertainment	In	Category 4	Portable DVD players, radios & stereos that rely on a 12-volt power supply & are not permanently installed in the vehicle are covered by the regulations. A car radio that is purchased separately to be permanently installed in a vehicle & wired into the car's electrical system, & likely to remain with the car until it is sold or scrapped, would be considered out of scope
Illuminated fire-exit sign	In	Category 5	
Light Switches	Out		Unless they have additional functionality & include active electronics such as a PCB or a circuit breaker. They would then fall within scope & would be in category 2
Loadbanks (testing systems for electric power supplies)	In	Category 9	
Loft ladders with electronic controls	In	Category 2	
Massage chairs & massage appliances	In	Category 1 or 2	Large massage chairs should be included as category 1. Massage pads that fit onto chairs & other massage equipment is category 2
Memory cards, USB sticks, SIM cards	In	Category 3	
RFID (radio-frequency identification devices) radio tracking devices,	In	Category 3	The only exception is where a RFID is a security feature which forms part of the packaging of a product

Product	In or out?	Category	Comments
including pet ID chips, anti-theft devices & electronic tags for criminals			
Power-supply units	In	See comment	These act as transformers to alter the voltage or current, & so are finished products in their own right. They should be included in the same category as the products they come with (for example, mobile phone, laptop & so on)
Pumps, filters, fountains & so on for garden ponds	In	Category 6	
Roller screen with electronic winder functions	In	Category 2	
Satellite navigation (sat nav) systems	In	Category 3	Portable 'sat nav' systems are covered. 'Sat nav' systems that are permanently fixed & wired into a vehicle or yacht would be considered part of the vehicle &, as a consequence, are not be covered by the regulations
Security systems including CCTV	In	Category 4	Security systems which include motion sensors, video cameras or still cameras & display equipment & so on are classed as category 4 – equipment for recording or reproducing sound or images
Spa baths, hydrotherapy baths, computerised massage baths	In	Category 1	Although the main function of these items is a bath, a large part of the function & feature of the product is based on the added value provided by the electrical functions
Solar panels	Out	Does not apply	Solar panels on their own are not considered to be covered by the regulations. However, under article 13 of the WEEE directive, there is an option to have them included at a later date if this is agreed by the Technical Adaptation Committee
Spare parts	Out		Spare parts supplied to repair EEE are not covered by the regulations, as they are considered to be components or finished products. Note: spare parts may have to meet RoHS regulations. Producers should make sure their products keep to the requirements
Solar-powered items such as calculators, watches, garden pumps, phone chargers & so on	In	See comment	The category will depend on the product
Stairlifts	Out	Does not apply	Stairlifts & other lifts (for example, escalators) are not in any of the EEE categories & so are considered to be outside the regulations
Street lights	In	Category 5	The electrical parts are considered EEE, the bulb, wiring, control box, but not the concrete or metal lamp post
Sunbeds	In	See comment	Sunbeds are classed as category 2 & fluorescent bulbs should be included in category 5
Taps with built-in lights	Out	Does not apply	The main function of the item is a tap, & does not need electricity
Torches	In	Category 2	Both filament bulb & LED torches would fall into Category 2
Traffic lights	In	Category 9	
Under-floor heating systems	In	Category 1	Only if powered by electricity
Water coolers – bottle or mains supply	In	Category 1	or category 12 if it contains substances used for refrigeration
Wind turbines	See comment	Category 6	Large wind turbines would qualify as large-scale industrial tools & so would be exempt from the regulations. Small-scale wind turbines that could be used by a household, smallholding or at the roadside should be included in category 6
Wind-up torches & radios	In	See comment	These still rely on electricity to work, no matter whether the electricity is generated by the wind-up system. The category will depend on the product